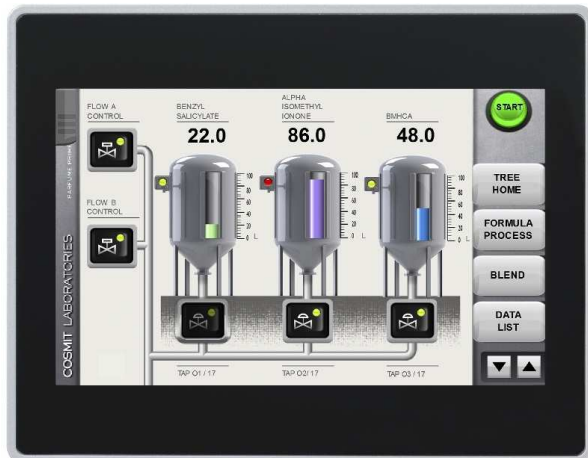


UniOP eTOP507

The UniOP eTOP Series 500 HMI products combine state-of-the-art features and top performance with an outstanding design. They are the ideal choice for all demanding HMI applications including factory and building automation.

The eTOP507 features a bright 7" TFT widescreen (16:9) display with a fully dimmable LED backlight. The JMobile software offers full vector graphic capabilities and plenty of connectivity options.



- 7" TFT color display, LED backlight
- 800x480 pixel (WVGA) resolution, 64K colors
- Resistive touchscreen
- 2 Ethernet ports with switch function
- 2 USB Host ports
- SD Card Slot
- Connection to fieldbus systems and I/O using optional plug-in modules
- Slim design. Mounting depth less than 50mm

Highlights

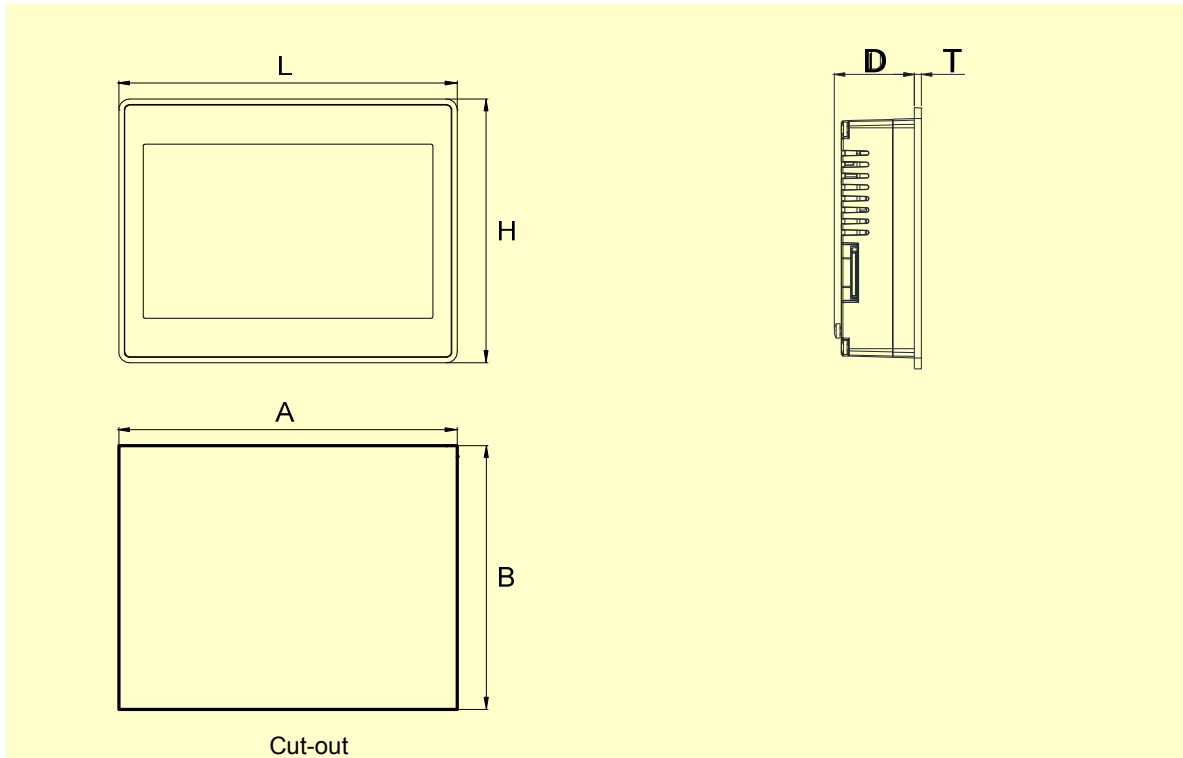
The eTOP Series 500 HMI panels have been designed to run the JMobile software.

- JMobile runtime included. Full compatibility with JMobile Studio.
- Full vector graphic support. Native support of SVG graphic objects. Transparency and alpha blending.
- Full object dynamics: control visibility and transparency, move, resize, rotate any object on screen. Change properties of basic and complex objects.
- TrueType fonts
- Multilanguage applications. Easily create and manage your applications in multiple languages to meet global requirements. Far East languages are supported. Tools available in JMobile Studio support easy third-party translations and help reducing development and maintenance costs of the application
- Data display in numerical, text, bargraph, analog gauges and graphic image formats.
- Rich set of state-of-the-art HMI features: data acquisition, alarm handling, scheduler and timed actions (daily and weekly schedulers, exception dates), recipes, users and passwords, e-mail and RSS feeds, rotating menus
- Includes support for a wide range of communication drivers for Factory and Building Automation systems.
- Multiple drivers communication capability.
- Remote monitoring and control. Client-Server functionality. Mobile clients supported.
- Remote maintenance and support with VNC-based functionality.
- Off-line simulation of the HMI application with JMobile Studio.
- Powerful scripting language for automating HMI applications. Script debugging improves efficiency in application development.
- Rich gallery of symbols and objects
- Project templates
- Optional plug-in modules for fieldbus systems, I/O and controllers.
- Display backlight dimmable to 0%

Technical Data

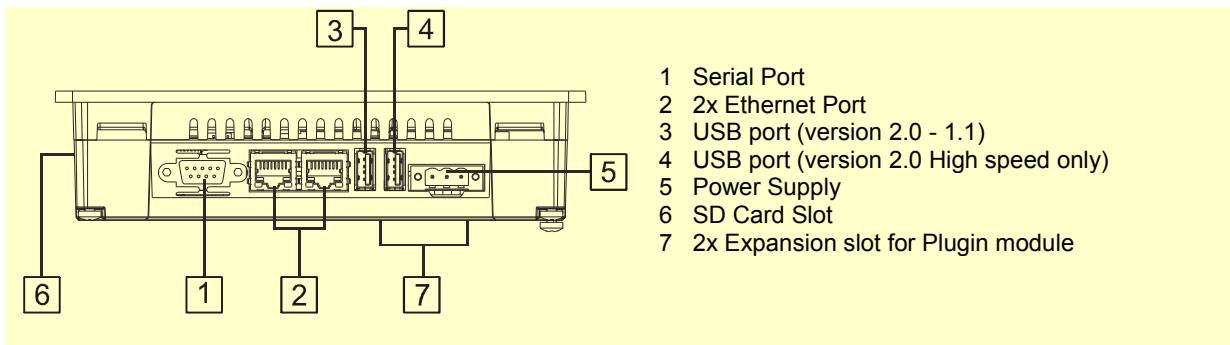
Display Type Resolution Active display area Colors Backlight Brightness Dimming	TFT 800x480, WVGA 7" diagonal 64K LED 300 Cd/m ² typ. Yes	Buzzer Ratings Power supply voltage Current consumption Fuse Weight Battery	Yes, audible feedback for touchscreen 24 Vdc (10 to 32 Vdc) 0.65A at 24Vdc(max.) Automatic Approx 1.0 Kg Rechargeable Lithium battery, not user-replaceable
System Resources Operating System User memory RAM	Microsoft Windows CE 6.0 128 MB Flash 256MB DDR	Environmental Conditions Operating temperature Storage temperature Operating and storage humidity Protection class	0 to 50 °C (vertical installation) -20 to +70 °C 5 – 85 % relative humidity, non-condensing IP66 (front) IP20 (rear)
Operator Interface Touchscreen LED indicators	Analog resistive 1 (dual color)	Dimensions Faceplate LxH Cutout AxB Depth D+T	187x147 mm (7.36x5.79") 176x136 mm (6.93x5.35") 47+4 mm (1.85+0.16")
Interface Ethernet USB Serial Expansion Slot Memory Card	2 10/100 Mbit with integrated Switch 2 Host Interface (1 version 2.0, 1 version 2.0 and 1.1) RS-232, RS-485, RS-422, software configurable 2 Optional plug-in SD Card Slot	Approvals CE DNV UL C-Tick GL	Emission EN 61000-6-4 Immunity EN 61000-6-2 for installation in industrial environments DNV Type Approval Certificate UL508 Listed Haz. Loc. Class I, Division 2, Groups A,B,C and D. C-Tick mark Germanischer Lloyd Type Approval Certificate
Functionality Vector graphics Object dynamics TrueType fonts Multiple driver communication Data acquisition and trend presentation Multilanguage Recipes Alarms Historical event list Users and passwords Hardware Real Time Clock Screen saver	Yes, includes SVG support Yes. Visibility, opacity, position, size, rotation for most object types. Yes Yes Yes. Flash memory storage limited only by available memory Yes, with runtime language switching. Yes. Flash memory storage limited only by available memory Yes Yes Yes Yes, with battery back-up Yes		

Dimensions



Cut-out

Connections



- 1 Serial Port
- 2 2x Ethernet Port
- 3 USB port (version 2.0 - 1.1)
- 4 USB port (version 2.0 High speed only)
- 5 Power Supply
- 6 SD Card Slot
- 7 2x Expansion slot for Plugin module

Ordering Information

Model	Part Number	Description
eTOP507-White	+ETOP507U1P1 +ETOP507U1P3	7" widescreen TFT color touchscreen with Ethernet and USB interfaces. White front panel. JMobile run-time.
eTOP507-Silver	+ETOP507U2P1 +ETOP507U2P3	7" widescreen TFT color touchscreen with Ethernet and USB interfaces. Silver front panel. JMobile run-time.
eTOP507-Black	+ETOP507U3P1 +ETOP507U3P3	7" widescreen TFT color touchscreen with Ethernet and USB interfaces. Black front panel. JMobile run-time.
PROTFOIL-07-GL	R-PROT12	Disposable protection foil for 5.7" and 7" eTOP touch panels (10 pieces).
PROTFOIL-07-UV	R-PROT18	Disposable protection foil for 5.7" and 7" eTOP touch panels (10 pieces). UV resistant.

ptn0347**Ver. 1.9****Copyright © 2011-2014 Exor International S.p.A. – Verona, Italy**

Subject to change without notice

The information contained in this document is provided for informational purposes only. While efforts were made to verify the accuracy of the information contained in this documentation, it is provided "as is" without warranty of any kind.

www.uniop.com